



Herbert Gardens, NW10

£1,850,000

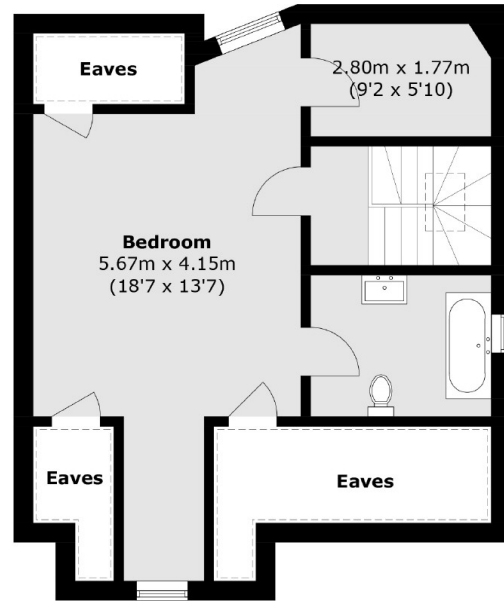
An impressive newly built four double bedroom family home, configured over three floors, with a private garden and off-street parking.

Herbert Gardens is a residential street located close to the shops, cafes and amenities on Chamberlayne Road, and in close proximity to the green open spaces of Queen's Park. Transport links include Kensal Rise (Overground), Brondesbury Park (Overground) and Willesden Green stations (Jubilee).

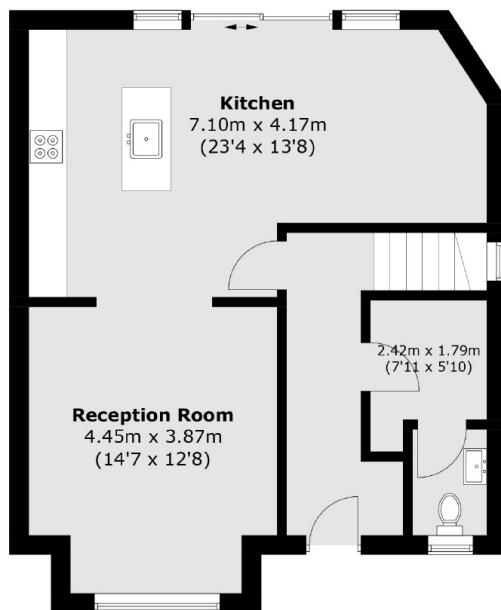
Features

- Freehold
- Four Double Bedrooms
- Three Bathrooms & WC
- Off-Street Parking
- Private Garden
- Close To Local Amenities

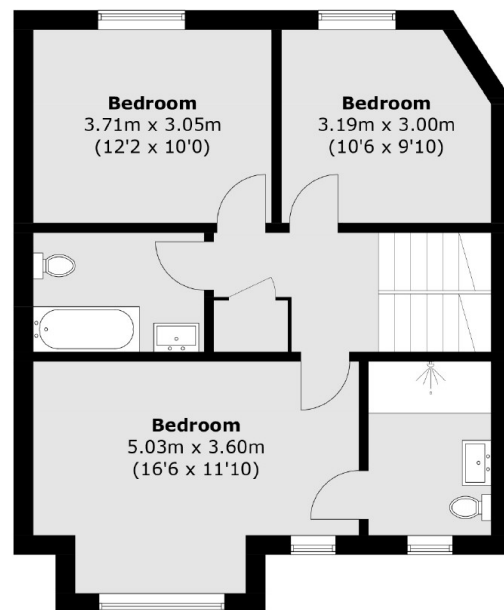
Herbert Gardens, London, NW10



Second Floor



Ground Floor



First Floor

Total area (approx.): 158.3 sq. m (1,704.0 sq. ft)
(Excluding Eaves)